

DURAVALVE MODEL DFI50 BALL VALVE

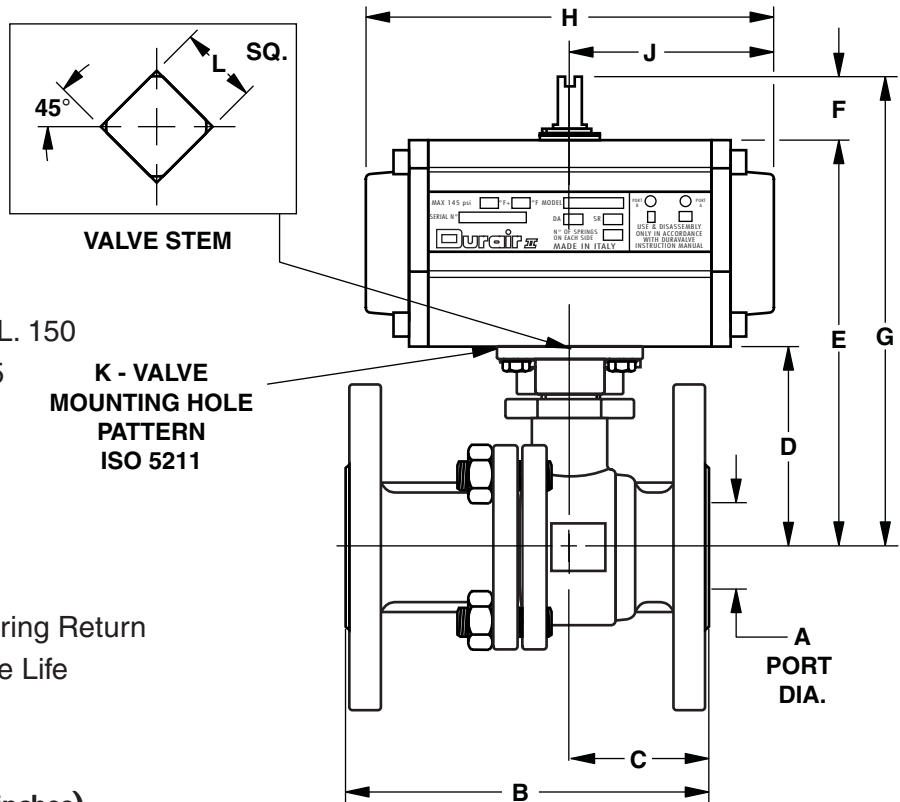
with DurAir II Pneumatic Actuator

VALVE FEATURES

- 2-Piece Full Port Construction
- Internal Entry Anti-Blowout Stem
- Adjustable Vee Style Stem Packing
- Anti Static Device
- Stainless Steel Cast Body and Ends
- Solid Ball
- Flanged End To End ANSI B16.10 CL. 150
- Flange Ends Conform to ANSI B16.5
- ISO 5211 Actuator Mounting Pad

ACTUATOR FEATURES

- ISO 5211 Mounting
- Aluminum Body
- Rack & Pinion Double Acting and Spring Return
- Low Friction Bearings and High Cycle Life



DOUBLE ACTING (Dimensions in inches)

Valve Size	Assembly No	Actuator Model No.	A	B	C	D	E	F	G	H	J	K*	mm. L
1/2	AS5302C	AP032BDA	.59	4.25	1.75	2.06	3.83	.79	4.62	4.61	2.31	F04	9
3/4	AS5303B	AP050ABDA	.79	4.63	2.00	2.18	4.81	.79	5.60	5.43	2.72	F04	9
1	AS5304B	AP063BDA	.98	5.00	2.13	2.63	5.90	.79	6.69	6.12	3.06	F05	11
1-1/2	AS5305B	AP075BDA	1.57	6.50	2.63	3.34	7.28	.79	8.07	8.27	4.14	F07	17
2	AS5306B	AP075BDA	1.97	7.00	2.87	3.75	7.69	.79	8.48	8.27	4.14	F07	17
3	AS5307B	AP115DA	3.15	8.00	3.63	5.19	10.79	1.18	11.97	12.2	6.10	F10	22
4	AS5308B	AP125DA	3.94	9.00	4.50	6.19	12.29	1.18	13.47	14.25	7.12	F10	27
6	AS5309B	AP160DA	5.91	15.50	6.00	8.25	15.97	1.97	17.94	18.19	9.10	F12	27

SPRING RETURN (Dimensions in inches)

Valve Size	Assembly No	Actuator Model No.	A	B	C	D	E	F	G	H	J	K*	mm. L
1/2	AS5312B	AP050ABSR5	.59	4.25	1.75	2.06	4.69	.79	5.48	5.43	2.72	F04	9
3/4	AS5313B	AP063ABSR5	.79	4.63	2.00	2.18	5.45	.79	6.24	6.12	3.06	F04	9
1	AS5314B	AP063BSR5	.98	5.00	2.13	2.63	5.90	.79	6.69	6.12	3.06	F05	11
1-1/2	AS5315C	AP085SR5	1.57	6.50	2.63	3.34	7.67	.79	8.46	8.97	4.49	F07	17
2	AS5316B	AP100SR5	1.97	7.00	2.87	3.75	8.67	.79	9.46	11.04	5.52	F07	17
3	AS5317C	AP145SR5	3.15	8.00	3.63	5.19	12.08	1.18	13.26	15.35	7.68	F10	22
4	AS5318B	AP160SR5	3.94	9.00	4.50	6.19	13.91	1.97	15.88	18.19	9.10	F10	27
6†	AS5319	AP200SR5	5.91	15.50	6.00	8.25	20.7	1.97	22.67	22.63	11.32	F12	27

† 6" size with AP200SR5 actuator utilizes 3" high bracket.

* K-ISO 5211

