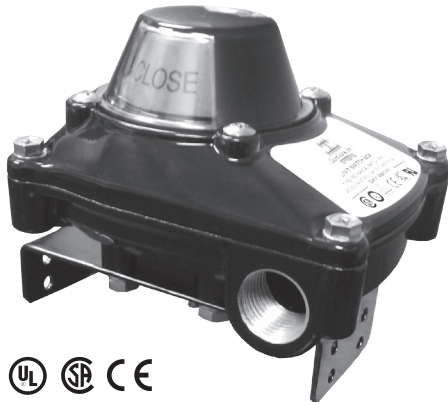


DURAVALVE ALS-250 LIMIT SWITCH BOX



FEATURES

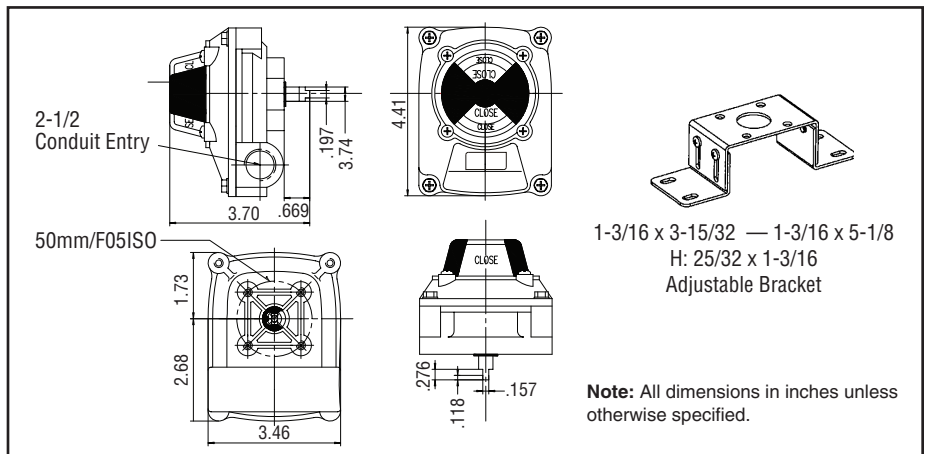
- **Weatherproof Enclosure**
- **Valve Position Indicator:** Strong clear polycarbonate dome visually displays the valve position open or closed.
- **Quick-Set Cams:** Switch cam position can be quickly adjusted without the need for tools.
- **Multipoint Terminal Block:** Terminal strip has 8 pre-wired and numbered contacts for clear and easy installation.

- **Micro Switches:**
Type – Mechanical – (2) SPDT
Voltage – MAX 250V AC or DC
Current – 0.6A 125V DC or 16A 1/2HP 125, 250V AC
- **Dual Wire Potting:** ALS 250 – Dual 1/2" conduit entries
- **Captive Cover Bolts:** No loose bolts when cover is open for installation or maintenance.
- **Easy Mounting:** Adjustable brackets to NAMUR standards.
- **Working Temperature:** -20° F to 176° F

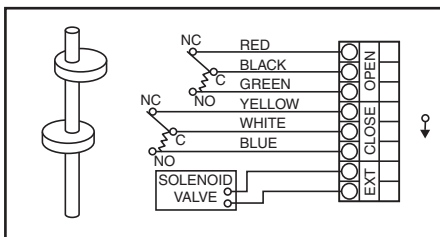
MATERIALS OF CONSTRUCTION

Description	Material	Quantity
Body	Die-Cast Aluminum-Powder Epoxy Coated	1
Position Indicator	Polycarbonate	1
Bolt	316 Stainless Steel	4
Shaft (stem)	316 Stainless Steel	1
Micro Switch	Polycarbonate	2
Seal	EPDM	1
Mounting Bracket	Steel	1

DIMENSIONS IN INCHES



WIRING DIAGRAM MECHANICAL SWITCH (2 SPDT)



WIRING INSTRUCTIONS

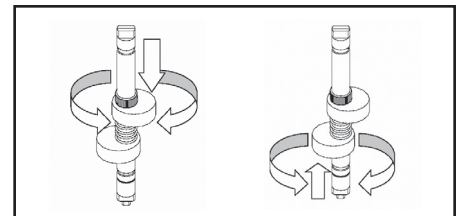
The DuraValve Limit Switch features pre-wired switches. All user connections are made at the numbered terminal strip. A wiring diagram is located inside the cover and indicates which terminal numbers correspond to which contacts (normally open or normally closed). Follow the wiring diagram and electric code to connect switches to your system. See standard wiring diagram above.

ADJUSTING LIMIT SWITCHES

The DuraValve Limit Switch features easy-set cams which are used to trip the limit switches. These cams are easily adjusted without tools. **Caution:** Disconnect power before removing cover. Rotate actuator/valve to full clockwise (CW) position.

Adjust cam(s) associated with CW as follows:

1. Push or pull cam against spring to disengage it from splines.
2. Rotate cam CW breaking contact with the switch (or moving magnet away from switch).
3. Continue rotating cam CW until switch trips.
4. Rotate cam and reengage it with splines.



Rotate actuator/valve to full counterclockwise (CCW) position. Adjust cam(s) associated with CCW as described in steps 1 through 4 except rotate cam(s) CCW.

Note: The factory setting is top switch clockwise (closed). Second switch is counterclockwise (open)

ADJUSTING VISUAL INDICATOR

The dome visual indicator can be adjusted to match the dome's clear windows to the rotors red and yellow quadrants. When cover is removed, use a screw driver to turn the rotor to the desired position.

