

# DURAVALVE

## ELECTRIC ACTUATORS

---



# DURAVALVE ELECTRIC ACTUATORS

## Features and Specifications



### FEATURES

- **10 sizes**
- **Torque:** 100-5000 In-Lbs.
- **Enclosures:**  
NEMA 4 Watertight Standard  
NEMA 7 Explosion Proof Optional
- **Materials:**  
Enclosure - Cast aluminum with a thermally bonded polyester powder coating.  
Output Shaft - Stainless Steel  
Fasteners - Stainless Steel

- **Voltages:**  
115 VAC, 60 Hz, 1 PH. PSC — Standard  
240 and 24 VAC — Optional  
12 and 24 VDC — Optional  
Thermal overload protection — Standard  
Wired for light indication — Standard
- **Limit Switches:**  
Two SPDT, Independently adjustable from 0 to 90 degrees  
15A, 1/2 HP 125, 250 VAC 0.5A, 125 VDC
- **Terminal Strip Connection:** AWG 14
- **Lubrication:** Permanent
- **Installation:** Universal
- **Temperature Limits:**  
-40 degrees F. to 150 Degrees F.  
(Heater required at 0 degrees F. and below.)
- **CSA Certified:** Models through 3,840 In-Lbs.

### OPTIONAL FEATURES

Voltages, heater-thermostat, additional limit switches, motor brake (required for butterfly valves), extended duty motors.

**Note:** Not All Options Available On All Models.

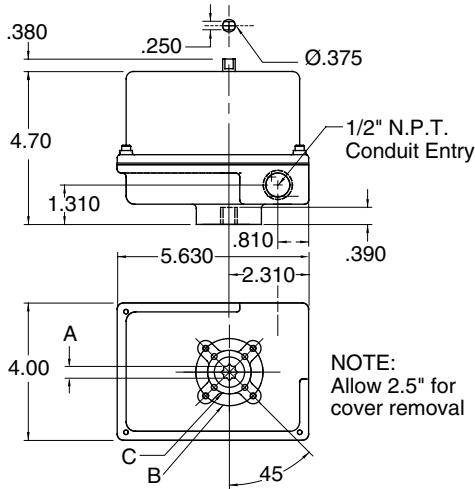
### SPECIFICATIONS

Actuator Model	Output Torque (in-lb)	Duty Cycles	Standard Motor	90 Deg. Time Sec.	Locked Rotor Current/Amps	Manual Override	ISO-5211 Mtg. Pattern	Approximate Weight lbs.
DR-2A	100	75%	115 VAC, 60Hz, 1 Ph. PSC	2.5	.55	STD. (Except NEMA 7 & DC Motors)	F03/09	5
DR-2B	100	75%	115 VAC, 60Hz, 1 Ph. PSC	2.5	.55	STD. (Except NEMA 7 & DC Motors)	F04/11	5
DSR-5	200	25%	115 VAC, 60Hz, 1 Ph. PSC	5	.75	STD. (Except DC Motors)	F05/14	6
DSX-5	300	25%	115 VAC, 60Hz, 1 Ph. PSC	5	.99	STD. (Except DC Motors)	F05/14	6
DSH-10	400	25%	115 VAC, 60Hz, 1 Ph. PSC	10	.75	STD. NEMA 4 (Optional NEMA 7)	F07/17	13 (NEMA 7 16)
DMR-15	675	25%	115 VAC, 60Hz, 1 Ph. PSC	15	.75	STD. NEMA 4 (Optional NEMA 7)	F07/17	13 (NEMA 7 16)
DML-15	1000	25%	115 VAC, 60Hz, 1 Ph. PSC	15	1.1	STD. NEMA 4 (Optional NEMA 7)	F07/17	13 (NEMA 7 16)
DMH-30	1500	25%	115 VAC, 60Hz, 1 Ph. PSC	30	1.1	STD. NEMA 4 (Optional NEMA 7)	F07/17	13 (NEMA 7 16)
DLA-12	2000	100%	115 VAC, 60Hz, 1 Ph. PSC	12	1.5	STD.	SAE	30
DLX-14	3840	100%	115 VAC, 60Hz, 1 Ph. PSC	14	2.9	STD.	SAE	30
D5K-68	5000	100%	115 VAC, 60Hz, 1 Ph. PSC	68	2.9	STD.	SAE	100



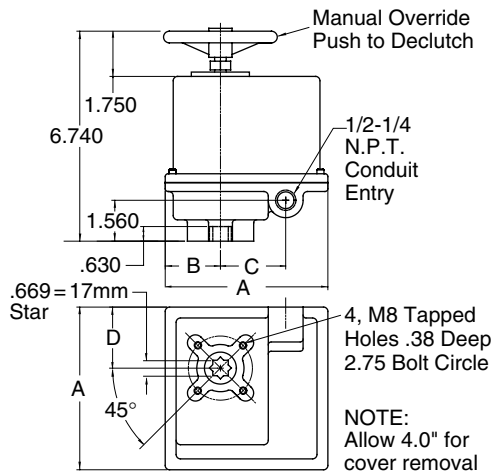
# Dimensional Drawings

## DR-2A & DR-2B



Model	ISO-5211 Mtg. Pattern.	A	B	C
DR-2A	F03	0.354 Star (9mm)	4, M5 TAP 0.44 DP. 1.968 B.C.	4, M5 TAP 0.44 1.417 B.C.
DR-2B	F04	0.433 Star (11mm)	4, M5 TAP 0.44 DP. 2.121 B.C.	4, M5 TAP 0.44 1.653 B.C.

## DSH-10, DMR-15, DML-15 & DMH-30

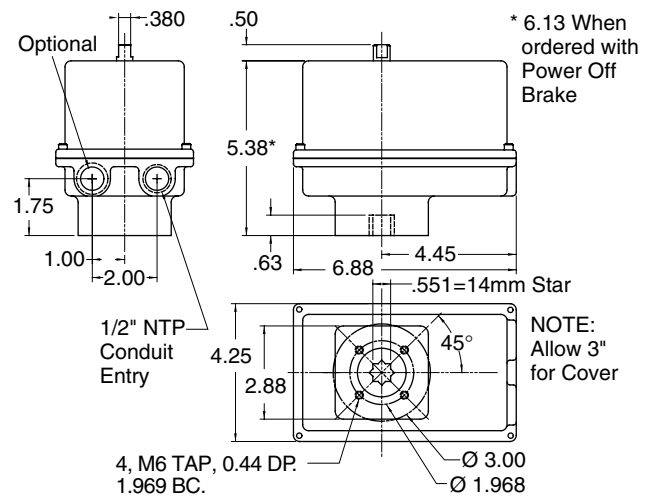


ISO-5211 - F07 Mounting Pattern

Enclosure	A	B	C	D
NEMA 4	7.0	2.30	2.81	2.63
NEMA 7	8.5	3.13	2.81	3.38

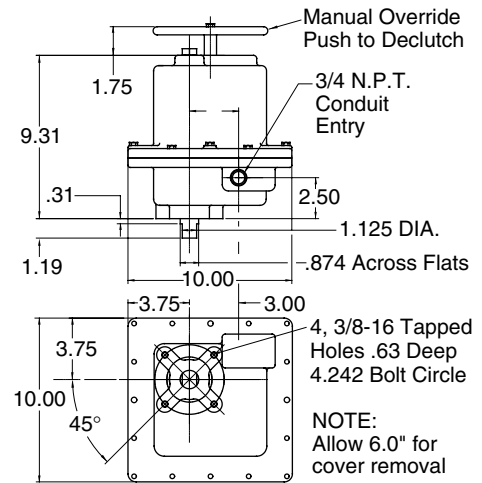
**Note:**  
All dimensions in inches unless otherwise specified.

## DSR-5 & DSX-5

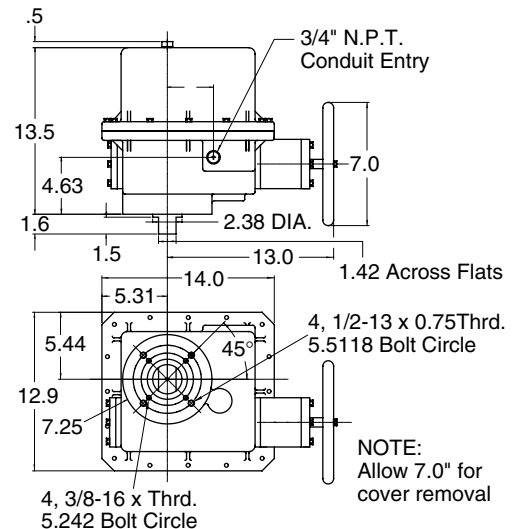


ISO-5211 - F05 Mounting Pattern

## DLA-12 & DLX-14



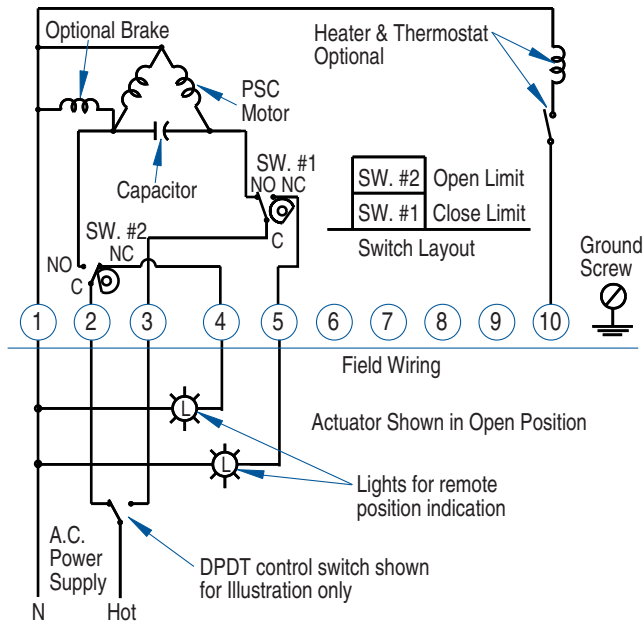
## DSK-68



# DURAVALVE ELECTRIC ACTUATORS

## Wiring Diagrams

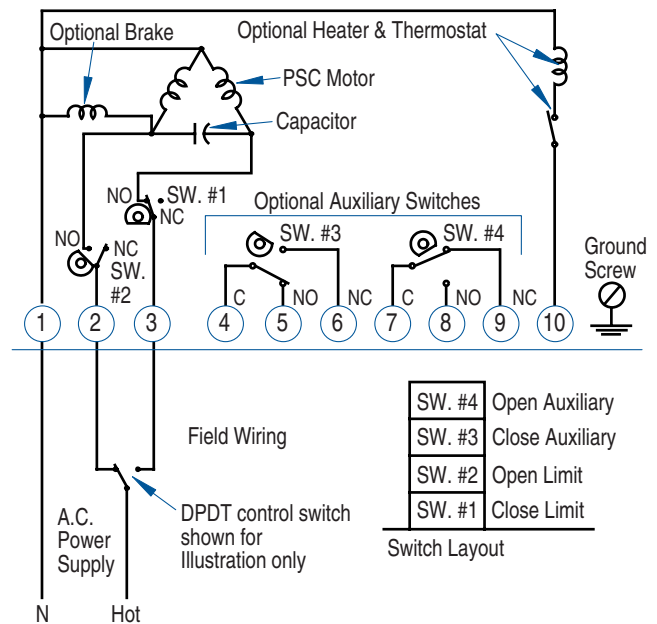
### TYPICAL WIRING DIAGRAM



**Notes:**

Power to terminals 1 & 2 opens valve (CCW rotation).  
 Power to terminals 1 & 3 closes valve (CW rotation).  
 Terminals 4 & 5 for light indication.

### TYPICAL WIRING DIAGRAM with TWO AUXILIARY SWITCHES



**Notes:**

Power to terminals 1 & 2 opens valve (CCW rotation).  
 Power to terminals 1 & 3 closes valve (CW rotation).  
 Terminals 4 through 9 for auxiliary switch connection.

Wiring diagram illustrates the actuator in the open position  
 actuators are shipped in the open position unless otherwise specified.

## Ordering Information

**When ordering please specify:**

1. Model
2. Actuator Electrical Requirements
  - a) Voltage
  - b) Hertz
  - c) Phase
3. Enclosure Type
  - a) NEMA 4
  - b) NEMA 4X
  - c) NEMA 7
  - d) NEMA 4 & 7
4. Optional Equipment Required

Note: The right is reserved to change or modify product design or construction without prior notice and without incurring any obligation to make such changes or modifications on products previously or subsequently sold.

