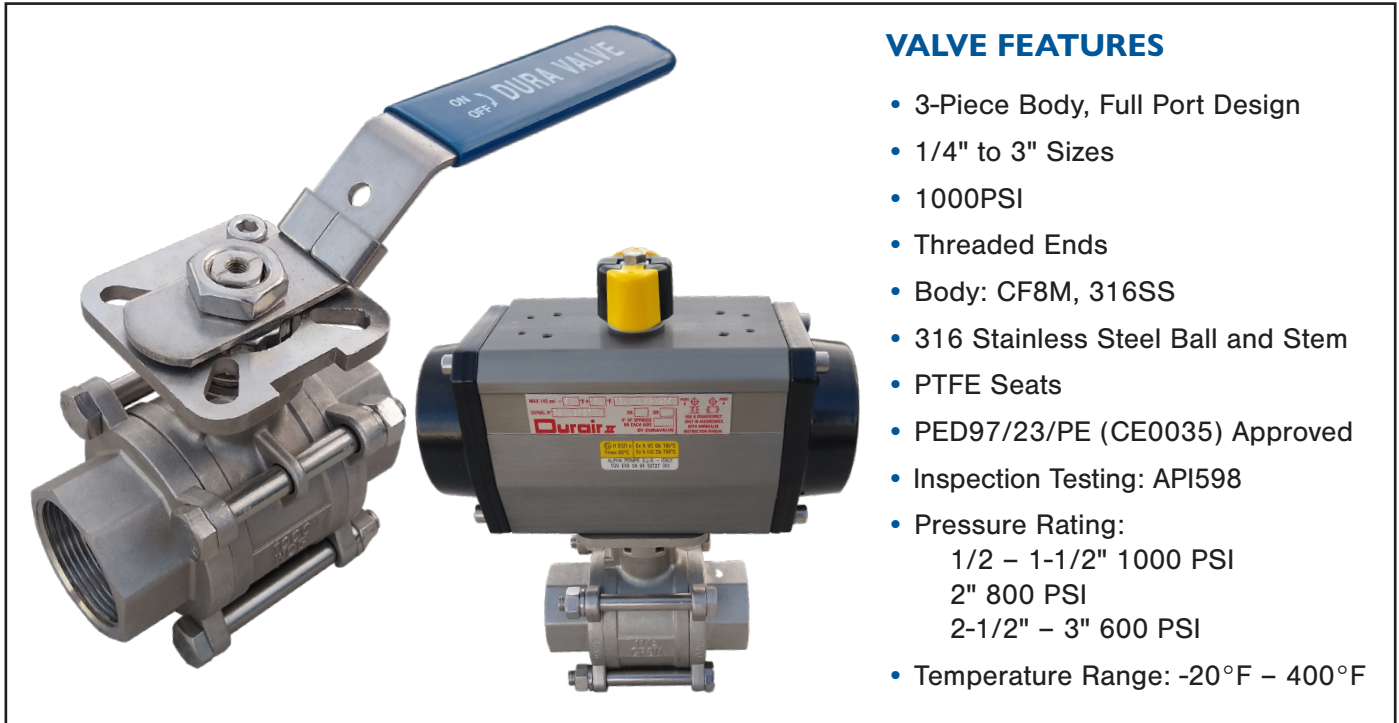


DURAVALVE MODEL DM350 BALL VALVE

3-PIECE FULL PORT STAINLESS STEEL

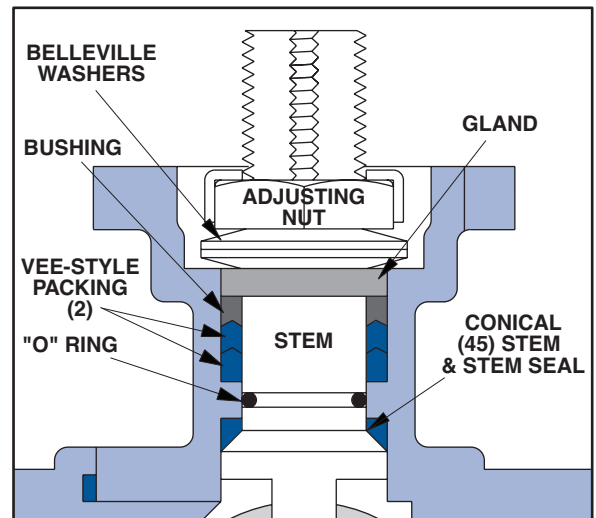


DESIGN ADVANTAGES

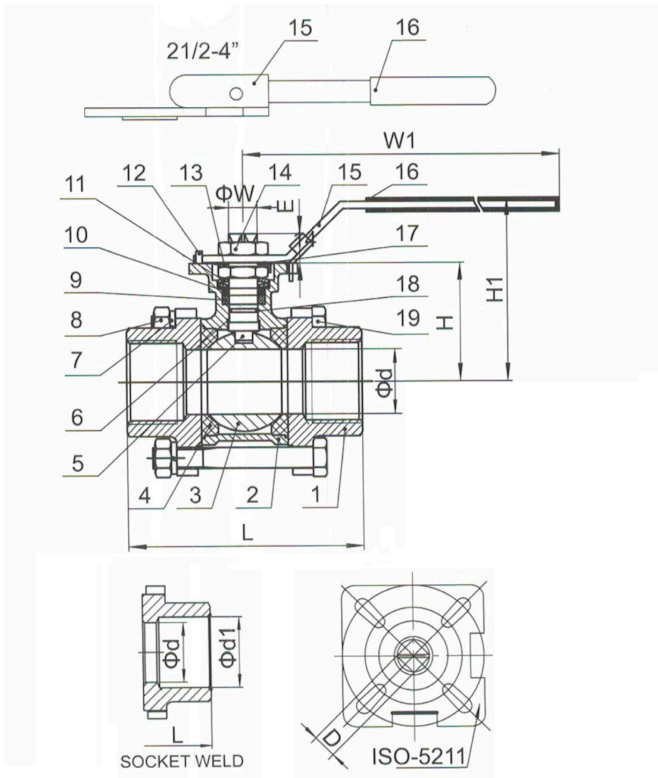
- ISO 5211 Direct Mounting Pad – provides for precise shaft alignment and eliminates the need for brackets and couplings
- 3-Piece Investment Cast Body Construction
- Improved Seat Material – extends cycle life and reduces torque
- Blowout Proof Stem
- Anti-Static Device (option)
- Locking Device for valves with handle
- Adjustable “Live Loaded” Stem Seal

STEM SEAL DESIGN

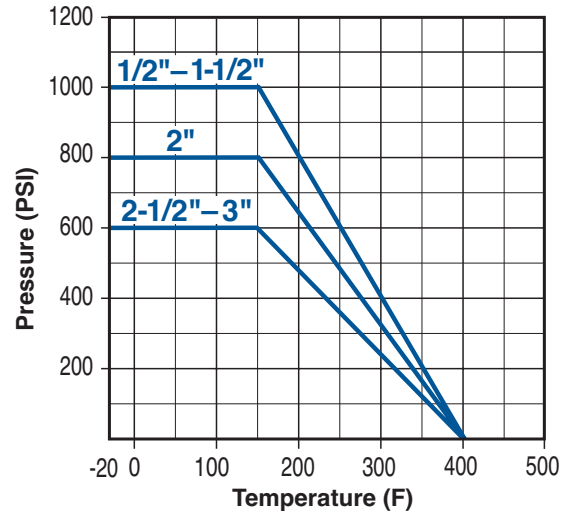
DuraValve’s triple stem seal design provides for an extended valve cycle life. The primary seal is a tapered seal ring that fits firmly on a tapered portion of the stem shoulder. The secondary (back-up) seal is provided by an O-ring and a set of Vee packing rings, energized by belleville washers. This design adjusts packing compression to compensate for wear, pressure or temperature fluctuations.



DURAVALVE MODEL DM350 BALL VALVE



PRESSURE/TEMPERATURE CURVE



MATERIALS OF CONSTRUCTION

Item	Description	Qty.	Material	Item	Description	Qty.	Material
1	BODY	1	CF8M SS	11	BELLEVILLE WASHER	2	304 SS
2	CAP	2	CF8M SS	12	LOCK WASHER	1	304 SS
3	BALL	1	CF8M SS	13	STOP PIN	1	304 SS
4	BALL SEAT	2	PTFE	14	HANDLE NUT	2	304 SS
5	STEM	1	316 SS	15	HANDLE	1	304 SS
6	THRUST WASHER	1	PTFE	16	HANDLE SLEEVE	1	PVC
7	SPRING WASHER	4	304 SS	17	WASHER	1	CF8M SS
8	BOLT NUT	4	304 SS	18	O-RING	1	VITON
9	STEM PACKING	1	PTFE	19	BOLT	4	304 SS
10	RING	1	304 SS				

DIMENSIONS IN INCHES

Valve Size	Dia. d	Dia. d1	L	H	D	E	W	ISO 5211	W1	H1	Torque
1/4	0.46	0.56	2.17	1.50	0.35	0.35	0.47	F03/F04	5.63	2.56	50
3/8	0.49	0.70	2.36	1.50	0.35	0.35	0.47	F03/F04	5.63	2.56	50
1/2	0.59	0.86	2.96	1.50	0.35	0.35	0.47	F03/F04	5.63	2.56	50
3/4	0.79	1.07	3.15	1.85	0.35	0.35	0.47	F03/F04	5.63	2.99	70
1	0.98	1.34	3.54	2.36	0.43	0.43	0.55	F04/F05	6.30	3.74	100
1-1/4	1.26	1.68	4.33	2.47	0.43	0.43	0.55	F04/F05	6.30	3.74	220
1-1/2	1.50	1.92	4.72	3.11	0.55	0.55	0.70	F05/F07	7.36	4.52	390
2	1.97	2.40	5.51	3.46	0.55	0.55	0.70	F05/F07	7.36	4.88	480
2-1/2	2.52	2.91	7.28	4.29	0.67	0.67	0.87	F07/F10	13.78	5.51	1050
3	2.99	3.54	8.07	4.57	0.67	0.67	0.87	F07/F10	13.78	5.90	1500

